



Product Service

# CERTIFICATE

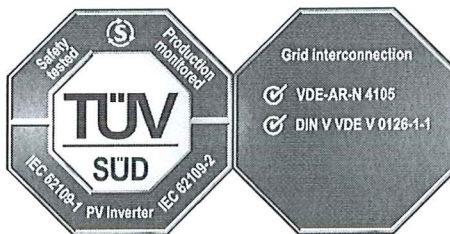
No. Z2 15 08 72237 083

**Holder of Certificate:** **Shenzhen INVT Electric Co., Ltd.**

No.4 Building, Gaofa Industrial Park  
 Longjing, Nanshan District  
 518055 Shenzhen  
 PEOPLE'S REPUBLIC OF CHINA



**Certification Mark:**




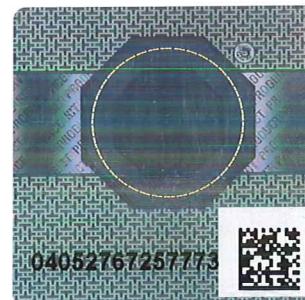
**Product:** **Converter  
 (PV grid-interactive inverter)**

The product was tested on a voluntary basis and complies with the essential requirements. The certification mark shown above can be affixed on the product. It is not permitted to alter the certification mark in any way. In addition the certification holder must not transfer the certificate to third parties. See also notes overleaf.

**Test report no.:** 64290150165601

**Valid until:** 2020-08-20

  
 ( Billy Qiu )



**Date,** 2015-08-25

Page 1 of 3



Product Service

**CERTIFICATE****No. Z2 15 08 72237 083****Model(s):** **iMars MG750TL, iMars MG1KTL, iMars MG1K5TL,  
iMars MG2KTL, iMars MG3KTL****Parameters:**

Vmax PV:	See page 3
Isc PV:	See page 3
Nominal AC voltage:	230 Va.c.
Max. continuous output current:	See page 3
Nominal Frequency:	50 Hz
Maximum apparent power SEmax:	See page 3
Maximum active power PEmax:	See page 3
Nominal active power Pn:	See page 3
Power factor (full load):	>0,99
Protective class:	I
Ingress protection:	IP65

Remark: Additional test summary of  
VDE-AR-N 4105 F.3 & F.4 are attached at  
the end of the technical report.

**Tested according to:**

IEC 62109-1(ed.1)
EN 62109-1:2010
IEC 62109-2(ed.1)
EN 62109-2:2011
DIN VDE 0126-1-1:2013
VDE-AR-N 4105:2011
DIN VDE V 0124-100:2012

**Production Facility(ies):** 77238



Product Service

# CERTIFICATE

No. Z2 15 08 72237 083

Model	iMars MG750TL	iMars MG1KTL	iMars MG1K5TL	iMars MG2KTL	iMars MG3KTL
V <sub>max</sub> PV:	400 Vd.c.	450 Vd.c.	450 Vd.c.	450 Vd.c.	500 Vd.c.
I <sub>sc</sub> PV:	8,8 A	9,9 A	11 A	13,2 A	16,5 A
Max. continuous output current:	3,6 A	4,5 A	6,5 A	9 A	13 A
Maximum apparent power S <sub>E<sub>max</sub></sub> :	776 VA	1013 VA	1517 VA	2042 VA	3028 VA
Maximum active power P <sub>E<sub>max</sub></sub> :	760 W	1012 W	1515 W	2037 W	3017 W
Nominal active power P <sub>n</sub> :	750 W	1000 W	1500 W	2000 W	3000 W

Test report no.: 64290150165601

Date, 2015-08-25